



ENGLAND  
GOLF

# KNOW

— THE —

# SCORE

With the **NEW**  
World Handicap System



## Why has the World Handicap System been created?

### WHS HAS BEEN CREATED TO:

- Allow golfers to obtain and maintain a Handicap Index
- Allow golfers to use their Handicap Index from course to course
- Allow golfers to compete, or play recreationally
- Unify the previous six different handicapping systems

To find out more on the  
World Handicap System visit:  
[englandgolf.org/whs](http://englandgolf.org/whs)



WORLD HANDICAP SYSTEM

R&A USGA

COMING INTO PLAY 2<sup>ND</sup> NOVEMBER 2020



ENGLAND  
GOLF

# KNOW — THE — SCORE



## What is the new World Handicap System?

The new World Handicap System (WHS) is designed to:

- Attract more players to the game
- Make handicapping easier to understand
- Give all golfers a Handicap Index that can be transferable from club to club

## Why has the WHS been created?

To allow as many golfers as possible the opportunity to:

- Obtain and maintain a Handicap Index and reduce barriers of entry
- Use their Handicap Index on any golf course around the world
- Compete, or play recreationally, fairly regardless of where they play

With golf being centred around one standard set of rules governed by The R&A and USGA, it makes sense to unify the previous six different Handicapping systems, making for a more inclusive and equitable sport. The WHS was therefore developed with consideration given to club golfers who play both sporadically and more regularly. With all golfers only initially required to submit scorecards for 54 holes to acquire a Handicap Index, the new WHS is less formidable for new players.

## How does the WHS work?

For golfers in England, calculating a new Handicap Index will be front of mind when adopting the WHS. The process will begin in the same way throughout the world – by accurately measuring a player's golfing ability.

For regular golfers, this will be done by:

- The WHS Software calculating the average of the eight best scores from the previous 20 rounds

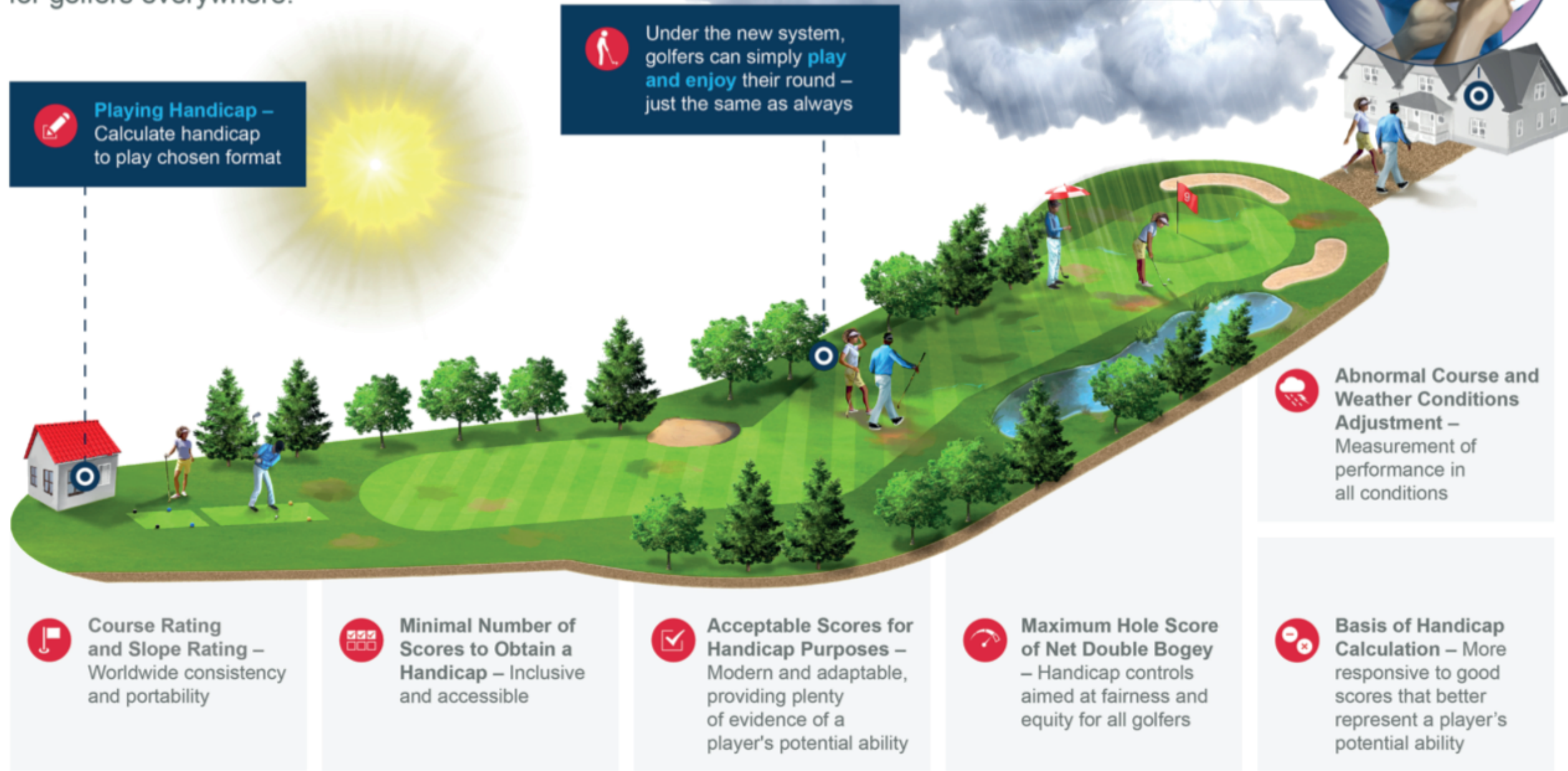
For new golfers, they will have to:

- Submit scorecards of 54 holes (3x18 holes, 6x 9 holes or any combination of 9 and 18 holes).

From this they will be provided an initial Handicap Index. After a player has achieved 20 scores, a 'fully developed' Handicap Index can be calculated to provide the most accurate representation of a player's ability. To ensure a player has only one Handicap Index, the golfer will nominate a home club.

# Highlights of the World Handicap System

These are some of the key features of the new system, supporting enjoyment of the game for golfers everywhere.



**Playing Handicap –**  
Calculate handicap to play chosen format

**Under the new system,**  
golfers can simply **play and enjoy** their round – just the same as always

**Player Submits Score –**  
Immediately allowing for real-time updates

**Abnormal Course and Weather Conditions Adjustment –**  
Measurement of performance in all conditions

**Course Rating and Slope Rating –**  
Worldwide consistency and portability

**Minimal Number of Scores to Obtain a Handicap –**  
Inclusive and accessible

**Acceptable Scores for Handicap Purposes –**  
Modern and adaptable, providing plenty of evidence of a player's potential ability

**Maximum Hole Score of Net Double Bogey –**  
Handicap controls aimed at fairness and equity for all golfers

**Basis of Handicap Calculation –**  
More responsive to good scores that better represent a player's potential ability